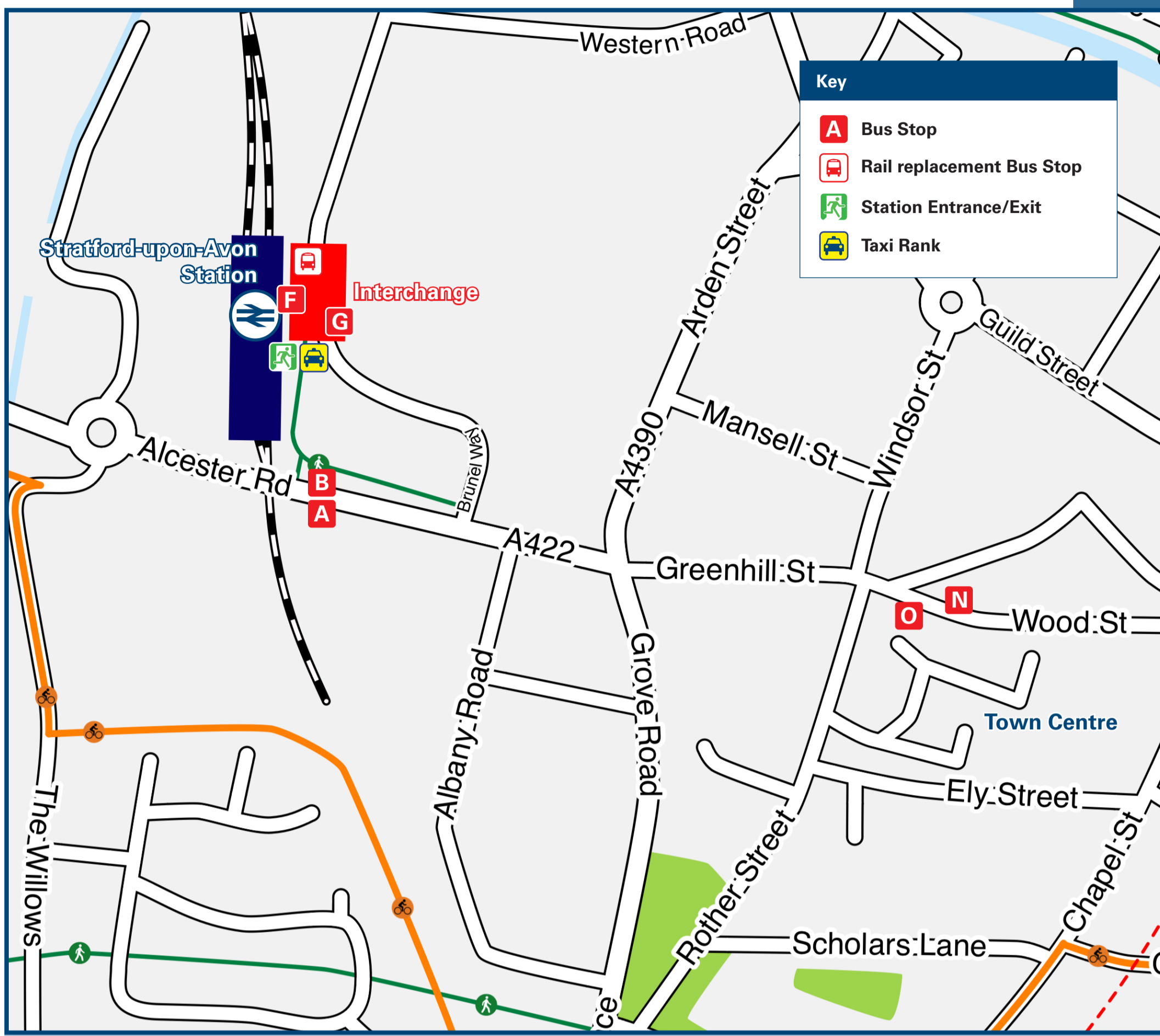




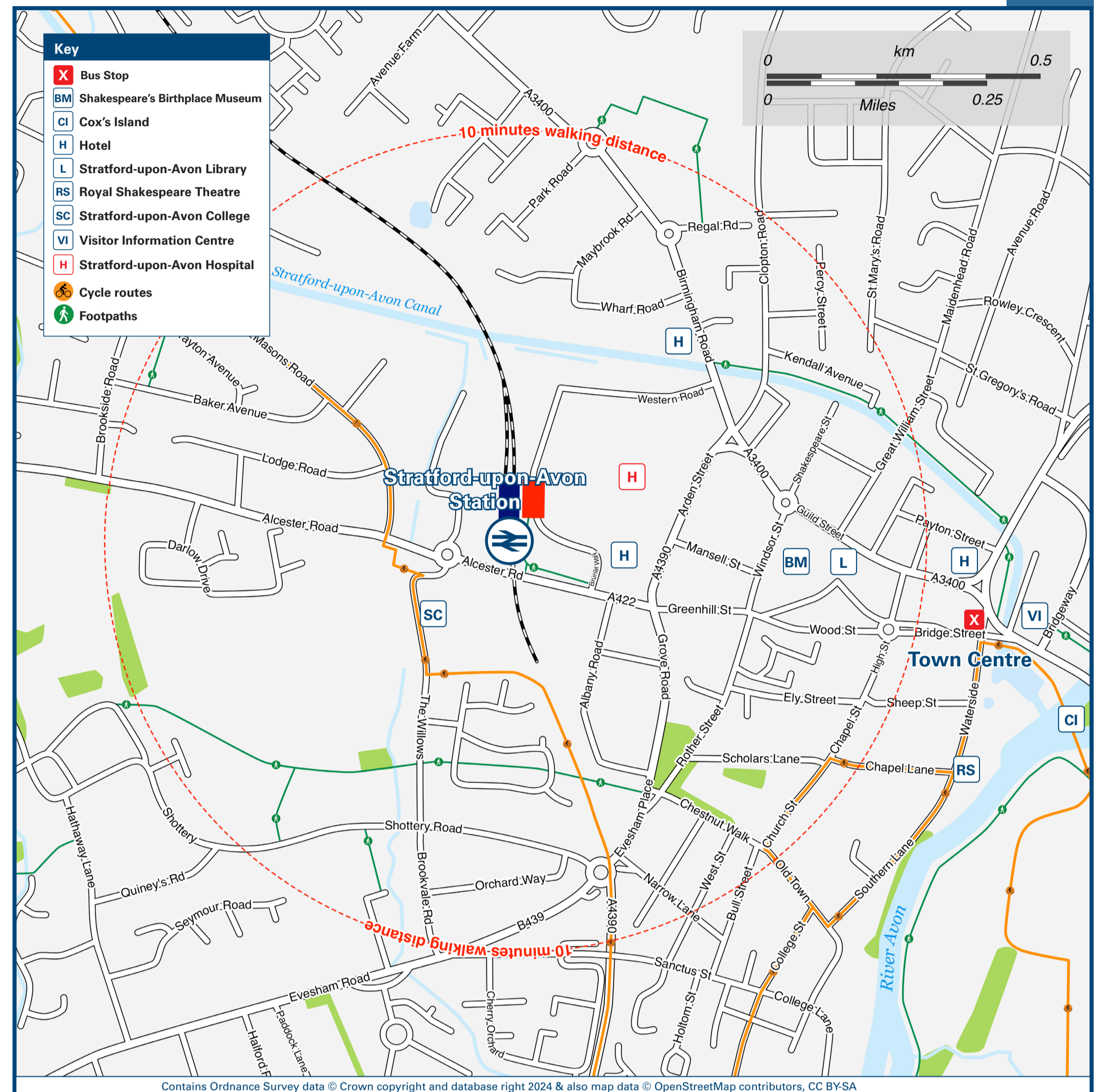
Stratford-upon-Avon Station Onward Travel Information

Buses and Taxis



Rail replacement buses/coaches depart from the Interchange bus stands outside this station (see map above).

Local area map



Main destinations by bus (Data correct at July 2024)

DESTINATION	BUS ROUTES	BUS STOP
Alcester	229*, X19	A
Alderminster	50, 51*, 75B*	O
Alveston	15, 77*, 77B*	A
Aston Cantlow	229	A
Banbury	75, 75A, 76, 76A, 75B*	N
Barford	15	N
Bearley	X20	N
Bidford-on-Avon	229	A
Blockley	1, 1A, 2, 2A	N
Broad Campden	2, 2A	N
Broadway	1, 1A	N
Charlecote	15	N
Chipping Campden	1, 1A, 2, 2A, 2A^	F
Chipping Norton	50	O
Clifford Chambers	1, 1A, 2, 2A, 3, 3A, 75A, 2A^, 75A#	F
Coughton	229*, X19	A
Coventry	X18+	X
Dodwell Park	28	O
Ettington	75, 76, 76A	N
Evesham	28	O
Gaydon (for British Motor Museum)	77	N
Great Aine	229*, X19	A
Halford	50*	O
Harvington	75*	N
Haselor	28	O
Henley-in-Arden	X19	A
Hockley Heath	X20	N
Ilmington	X20	N
Kinerton	51, 75A#	F
Leamington Spa	76, 76A*, 77	N
Long Compton	15, 77	N
Long Marston	15, 77, X18+	X
Lower Brailles	50	O
Lower Quinton	27++	A*, E*, O
Lower Quinton	75, 75A, 75B	N
Lower Quinton	1, 1A, 2, 2A, 3, 3A, 75A, 2A^, 75A#	F
Loxley	77	N

DESTINATION	BUS ROUTES	BUS STOP
Luddington	27++	A*, E*, O
Meon Vale	1, 1A, 2, 2A, 3, 3A, 75A, 2A^, 75A#	N
Mickleton	1, 1A, 2, 2A, 2A^	F
Monkspath	X20	N
Moreton-in-Marsh	1, 1A, 2, 2A, 51	N
Newbold-on-Stour	50, 51, 75B*	O
Norton	28	O
Pathlow	X20	N
Pebworth	27++	A*, E*, O
Preston On Stour	50, 51, 75B*	O
Redditch	229*, X19	A
Salford Priors	28	O
Sherbourne	15	N
Shipston-on-Stour	50, 51, 75B*, 75, 75A, 75A#	F
Shirley	X20	N
Sibford Ferris	75, 75A, 75B*	O
Sibford Gower	75, 75A, 75B*	O
Snitterfield	229	A
Solihull (Town Centre & Station)	X20	N
Stratford-upon-Avon Town area -		
- Alcester Road	15, 229, X19	A
- Avon Crescent	15	N
- Bridgetown Estate	1A, 2A, 3A, 75A	N
- Clopton (Justins Avenue)	5	N
- Old Town (Seven Meadows Road)	50, 51, 75B*	O
- Racecourse (Luddington Road)	27++	A*, E*, O
- Stratford Park & Ride Car Park	Park & Ride@	A
- Stratford-upon-Avon Tour Bus	Park & Ride@	A*
- Timothy's Bridge Road	Tour Bus	A
- Town Centre	5 (Flexibus), 19, 27*, 229, X19, Park & Ride@	B
- Trevelyan Crescent	19, 229	A
- Trinity Mead	2A^, 75A#	F
- West Green Drive	1A*, 2A*, 3A*, 4, 5, 75A*	N
	19, 27*, 229, X19	A

DESTINATION	BUS ROUTES	BUS STOP
Studley	229*, X19	A
Tiddington	15	N
Tredington	50, 51*, 75B*	O
Tysoe	75*	N
Upper Brailles	76	N
Upper Quinton	75, 75A, 75B*	N
Warwick	1, 1A, 2, 2A, 2A^	F
Wasperton (Turn)	15, 77	N
Welford-on-Avon	15, 77, X18+	X
Wellesbourne	15, 77	N
Weston Sub Edge	1, 1A	N
Willersley	1, 1A	N
Wilmcote	229	A
Wootton Wawen	X20	N

Notes

Bus routes 1, 1A, 2, 2A, 3, 3A, (4 & 5 run by Stagecoach), 19, 27, 51, 75, 75A, 75B, 76, 76A, 77 and 229 run Mondays to Saturdays.
 Bus routes (4 & 5 run by Flexibus), 15, 50, X18, X19, X20 and the Tour Bus run daily.
 For bus times and further information contact Traveline on 0871 200 22 33 or Stagecoach Midlands for bus routes 1, 1A, 2, 2A, 3, 3A, 4, 5, 15, 19, 27, 28, 50, 75, 75A, 76, 76A, 77, 77A, 229, X18, X19, X20 & Tour Bus call 0345 241 8000; Pulhams Coaches (for bus route 51) call 01451 820 369 or the A&M Group Flexibus (for bus routes 4 & 5) call 08085 212225.
 Direct trains operate to this destination from this station.
 It's a 10 minutes walk from this station to the town centre.
 * Limited journeys with this service from this bus stop to this destination, please check the timetable or contact Traveline.
 ^ Bus route 2A runs 1 evening bus from stop (F) at 18:30 Mondays to Saturdays only to this destination.
 + Bus route X18 departs from bus stop (X) on Bridge Street, see the Local area map for the location.
 ++ All bus route 27 journeys depart from bus stop (O) on Wood Street, limited evening buses also depart from stops (A) and (F) at this station, please check the timetable or contact Traveline.
 # Bus route 75A runs Friday and Saturday evenings only from stop (F) at 19:30, 20:40, 21:40 and 22:40 to this destination (Ilmington and Shipston at 19:30 and 22:40 only).
 @ Bus route Park & Ride (PR) operates daily (Sundays & most Bank Holidays run from March to September only).

Taxis

Stratford-upon-Avon station is served by a taxi rank or cab office. Check availability before travelling, and pre-book if necessary. Please consider using the following local operators: (Inclusion of this number doesn't represent any endorsement of the taxi firm)

Shakespeare Taxis 01789 266 100	Ideal Taxis 01789 290 444	Warwickshire Taxis 01789 508 898
---	-------------------------------------	--

Further information about all onward travel

Local Cycle Info warwickshire.gov.uk For more information about cycle routes.	National Cycle Info sustrans.org.uk Sustrans is the UK's leading sustainable transport charity.	Bus Times See timetable displays at bus stops. www.traveline.info 0871 200 22 33 call cost 12p per minute plus your phone company's access charge	NextBuses Find the bus times for your stop. Search for a bus stop by entering a postcode, street & town or a stop name & town.	PlusBus plusbus.info A discount price 'bus pass' that you buy with your train ticket. It gives you unlimited bus travel around your chosen town, on participating buses.
--	--	--	---	---

National Rail Enquiries

Online nationalrail.co.uk	NRE App Free National Rail Enquiries app for iOS and Android	Social Media facebook.com/nationalrailenq @nationalrailenq	Alert Me You can sign up to Alert Me messages on the National Rail Enquiries website where you can receive train and platform notifications directly to your smart phone. nationalrail.co.uk/alertme	Contact Centre 03457 48 49 50 Calls cost no more than calls to geographic numbers (01 or 02) and may be recorded.	PlusBike nationalrail.co.uk/plusbike For more information.
-------------------------------------	--	---	---	--	---

West Midlands Railway	National Rail Britain's train companies working together	

This poster shows details of popular destinations and main, frequent bus routes. Additional services may run, so please check with Traveline or see posters at local bus stops. Whilst considerable care has been taken to ensure the information contained on this poster is correct and accurate, National Rail cannot accept responsibility for any loss or inconvenience caused by any errors or omissions, or for loss, damage, injury or inconvenience relating to the cancellation, alteration, delay or diversion of a service. For any feedback, please e-mail comments@onwardtravelposters.com

Scan this code with your mobile for full station information.