



# Liverpool Lime Street Station

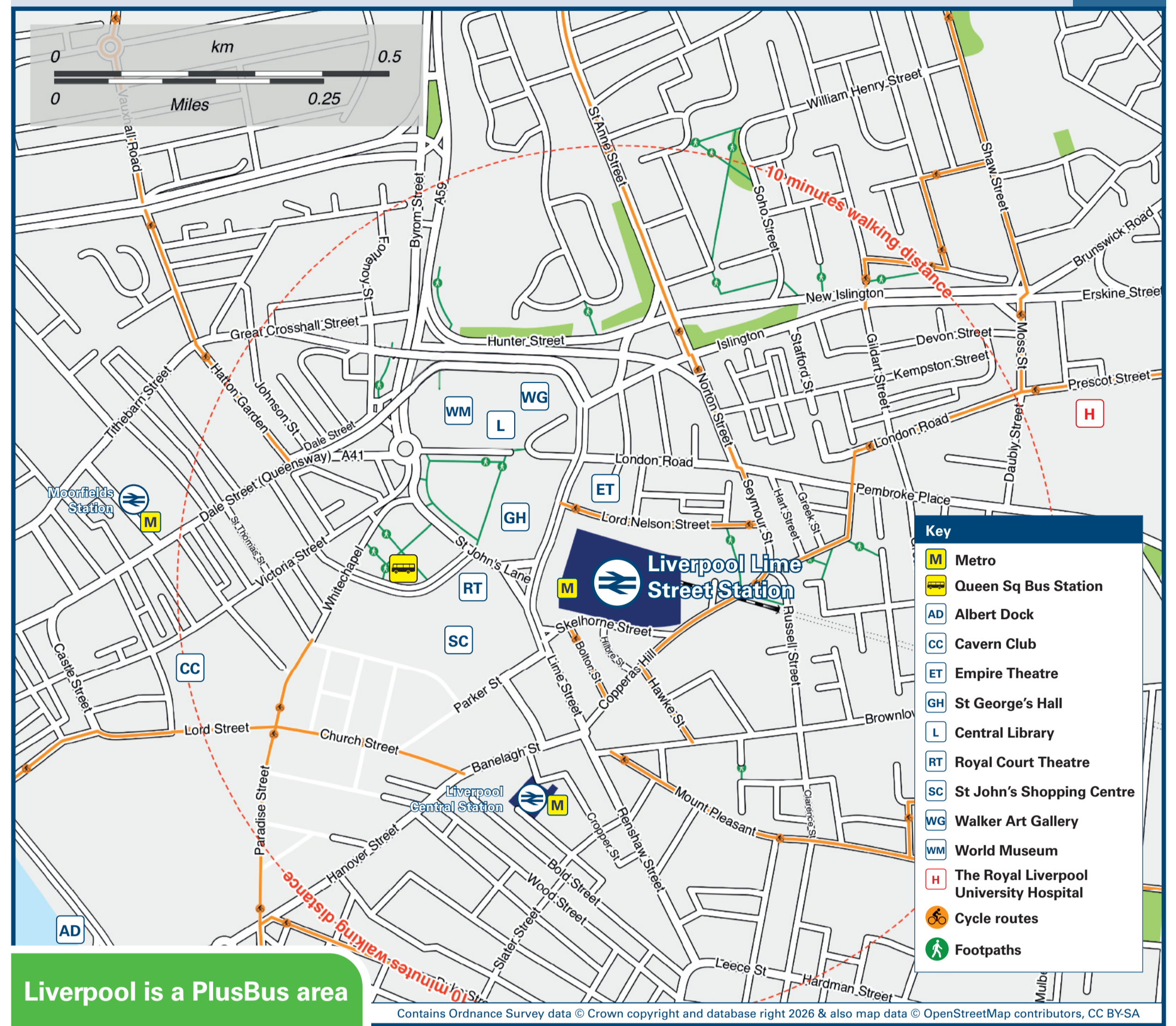
# Onward Travel Information

## Buses and Taxis



Rail replacement services depart at the Bus stop on Skelhorne Street, near the Tesco Express. L3 5GA.

## Local area map



Liverpool is a PlusBus area



Add PlusBus to your train ticket—now available on eTicket from leading rail ticketing apps—for unlimited bus travel in the PlusBus zone in your destination town or city. Visit [www.plusbus.info](http://www.plusbus.info)

## Main destinations by bus

(Data correct at April 2026)

DESTINATION	BUS ROUTES	BUS STOP
Aintree Racecourse	300, 310, 345	Q S 1, 10
Aintree University Hospital	17, 17A	Q S 6
Alder Hey Childrens Hospital	8, 9, 10, 10A, 10B, 15	Q S 1, Q S 2, Q S 4
Allerton	75, 86, 86A, 86C, 76	Q S 3, Q S 8, Q S 9
Anfield	17, 17A, 19	Q S 6
Anfield (for Liverpool FC)	17	Q S 6
Bank Hall Station	47, 53, 300, X2	Q S 1, 10, Q S 1, 11
Belle Vale	79	Q S 8
Bootle	47, 53, 300, X2	Q S 1, 10, Q S 1, 11
Broadgreen Hospital	7	Q S 8
Cabbage Hall	14, 14A	Q S 5
Calderstones Park	75, 86, 86C, 76	Q S 3, Q S 8, Q S 9
Clubmoor	14, 14A	Q S 5
Croxteth Country Park	18	Q S 4
Deysbrook Lane	12	Q S 3
Dog & Gun	14, 14A	Q S 5
Dovecot (Pilch Lane)	8, 9, 15	Q S 1, Q S 4
Everton (Breck Road)	14, 14A, 19	Q S 5, Q S 6
Everton (for Goodison Park)	19, 20, 21, 310, 345	Q S 6, Q S 7, Q S 1, 10
Everton (Robson Street)	19	Q S 6
Fazakerley	17, 17A, 20, 21	Q S 6, Q S 7
Garston	82	Q S 8
Gilmoor	86, 86A	Q S 9
Grange Park	14, 14A, 19	Q S 5, Q S 6
Great Crosby	10	Q S 2
Halewood (for Shopping Centre)	47, 53, X2	Q S 1, 10, Q S 1, 11
Hope University	79	Q S 8
Hough Green	76, 78	Q S 3, Q S 8
Huyton	75, 86C, 79C	Q S 6, Q S 9
James Street Station	8, 9, 10B, 15, 61	Q S 1, Q S 4, Q S 8
Kensington	10A, 18	Q S 9
	7	Q S 8
	8, 9, 10, 10A, 10B, 12, 13, 15, 18, 61	Q S 1, Q S 2, Q S 3, Q S 4, Q S 8

DESTINATION	BUS ROUTES	BUS STOP
Kirkby (for Kirkby Bus Station)	14A, 17A, 19, 20, 21	Q S 5, Q S 6, Q S 7
Kirkby (Westvale)	20, 21	Q S 7
Kirkdale	20, 21, 47, 53, 300, 310, 345, X2	Q S 7, Q S 1, 10, Q S 1, 11
Knowsley	7	Q S 8
Linacre	8, 9, 10B, 14A	Q S 1, Q S 5
Liverpool John Lennon Airport	53, X2	Q S 1, 11
Liverpool Women's Hospital (Crown Street)	500, 86A	Q S 8, Q S 9
Maghull	76, 86, 86A, 86C	Q S 8, Q S 9
Mossley Hill	300, 310	Q S 1, 10
Muirhead Avenue	86, 86A, 86C, 699#	Q S 8, Q S 9
Netherley	76	Q S 8
Norris Green	18	Q S 4
Northwood	79	Q S 8
Old Roan Station	79C	Q S 8
Old Swan	14, 14A, 17, 17A	Q S 5, Q S 6
Page Moss	21	Q S 7
Penny Lane	300, 310, 345	Q S 1, 10
Prescot	7	Q S 8
Royal Liverpool University Hospital	8, 9, 10, 10A, 10B, 12, 13, 14, 15, 17, 17A, 18, 19, 21, 61, 76, 78, 79C	Q S 1, Q S 2, Q S 3, Q S 4, Q S 5, Q S 6, Q S 9
Seaforth	86, 86A, 86C	Q S 8, Q S 9
Sefton Park	76	Q S 8
Southdene	10, 10A, 61	Q S 2, Q S 8
St Helens	8, 9, 10, 10A, 10B, 12, 13, 14, 15, 17, 17A, 18, 19, 21, 61, 76, 78, 79C	Q S 1, Q S 2, Q S 3, Q S 4, Q S 5, Q S 6, Q S 9
Stockbridge Village	47, 53, X2	Q S 1, 10, Q S 1, 11
Tower Hill	75	Q S 8
Toxteth	86C	Q S 8, Q S 9
Tuebrook	76	Q S 8
Vauxhall	75, 82	Q S 8, Q S 9
	86, 86A, 86C, 699#	Q S 8, Q S 9
	500	Q S 8
	76	Q S 8
	12, 13, 15, 18	Q S 3, Q S 4
	47, 300, 310, X2	Q S 1, 10, Q S 1, 11

DESTINATION	BUS ROUTES	BUS STOP
Walton	17, 17A, 20, 21, 300, 310, 345	Q S 6, Q S 7, Q S 1, 10
Walton Hall Park	19	Q S 6
Walton-on-the-Hill	20, 21, 310, 345	Q S 7, Q S 1, 10
Walton Vale	20, 21, 300, 310, 345	Q S 7, Q S 1, 10
Waterloo	47, 53, X2	Q S 1, Q S 1, 11
Warbreck Park	300, 310, 345	Q S 1, 10
Wavertree	79	Q S 8
	75, 80, 80A	Q S 8
	86, 86A, 86C, 699#	Q S 8, Q S 9
	61, 78, 79C	Q S 8
	7, 79	Q S 8
Wavertree Botanical Gardens	61, 79C	Q S 8
West Derby	12, 13, 15, 18	Q S 3, Q S 4
Whiston Hospital	10A, 61	Q S 2, Q S 8
Woolton	76, 78	Q S 8
	75	Q S 8

**Notes**

- PlusBus destination, please see below for details.
- Bus routes 8, 9, 86 and 86C operate Mondays to Saturdays, only.
- All other bus routes run daily (Mondays to Sundays) services.
- Plusbus services are valid on all Arriva North West, Huyton Travel, Peoples Bus, Stagecoach Cumbria and North Lancashire, and Stagecoach Merseyside and South Lancashire bus services.
- For bus times and days of operation please contact Traveline on [www.traveline.info](http://www.traveline.info) or call: 0871 200 22 33
- Direct trains operate to this destination from this station.
- Alternatively, take the Merseyrail underground service to Liverpool Central and change for a direct train service to this station.
- Change here for connecting domestic and international airline flights.
- Direct Liverpool Metro connection to this destination.
- Bus route 699 operates evenings Mondays to Fridays, and all day Saturday and Sunday.
- Bike Hire [www.citybikeliverpool.co.uk](http://www.citybikeliverpool.co.uk) (bike stands are located outside of the station front entrance)

**Taxis** Liverpool Lime Street station is a major station where taxis are usually available on a rank. Advance booking is not normally necessary, unless arriving early in the morning or late at night. Operators who may accept bookings include: (Inclusion of this number doesn't represent any endorsement of the taxi firm)

**Comcab** 0151 298 2222

**Alpha Taxis** 0151 722 8888.

**Mersey Cab** 07873 681 051

**Further information about all onward travel**

<b>Local Cycle Info</b> <a href="http://merseytravel.gov.uk">merseytravel.gov.uk</a> For more information about cycle routes.	<b>National Cycle Info</b> <a href="http://walkwheelcycletrust.org.uk">walkwheelcycletrust.org.uk</a>	<b>Bus Times</b> See timetable displays at bus stops. <a href="http://www.traveline.info">www.traveline.info</a> 0871 200 22 33 <small>calls cost 12p per minute plus your phone company's access charge</small>	<b>PlusBus</b> <a href="http://plusbus.info">plusbus.info</a> PlusBus is a discount price 'bus pass' that you buy with your train ticket. It gives you unlimited bus travel around your chosen town, on participating buses. Visit <a href="http://www.plusbus.info">www.plusbus.info</a>
---	--	--	---

**National Rail Enquiries**

<b>Online</b> <a href="http://nationalrail.co.uk">nationalrail.co.uk</a>	<b>NRE App</b> Free National Rail Enquiries app for iOS and Android	<b>Social Media</b> facebook.com/nationalrailenq @nationalrailenq	<b>Alert Me</b> You can sign up to Alert Me messages on the National Rail Enquiries website where you can receive train and platform notifications directly to your smart phone. <a href="http://nationalrail.co.uk/alertme">nationalrail.co.uk/alertme</a>	<b>Contact Centre</b> 03457 48 49 50 Calls cost no more than calls to geographic numbers (01 or 02) and may be recorded.	<b>PlusBike</b> <a href="http://nationalrail.co.uk/plusbike">nationalrail.co.uk/plusbike</a> For more information.
---	--	---	---	--	--

**NetworkRail**

**National Rail** Britain's train companies working together