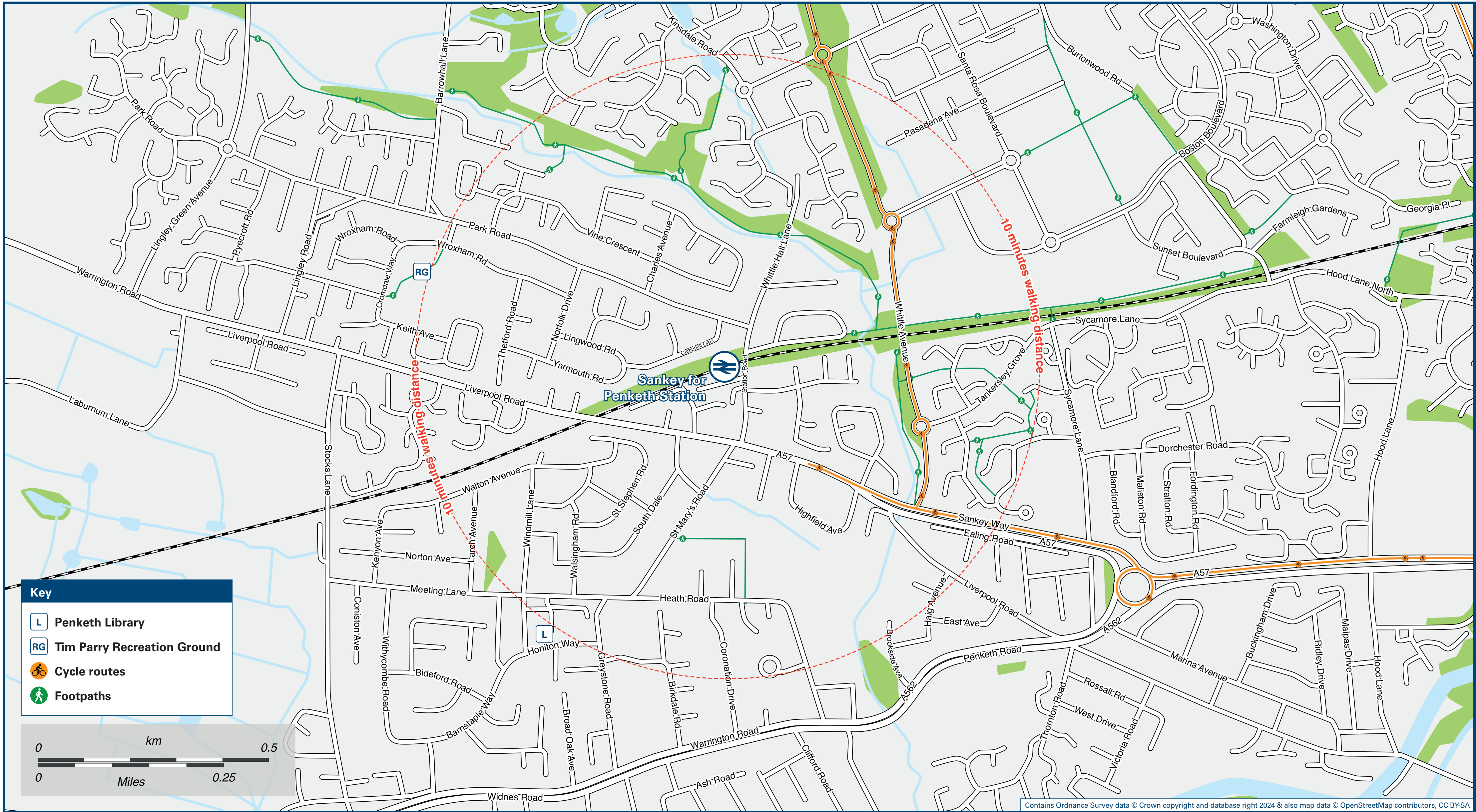




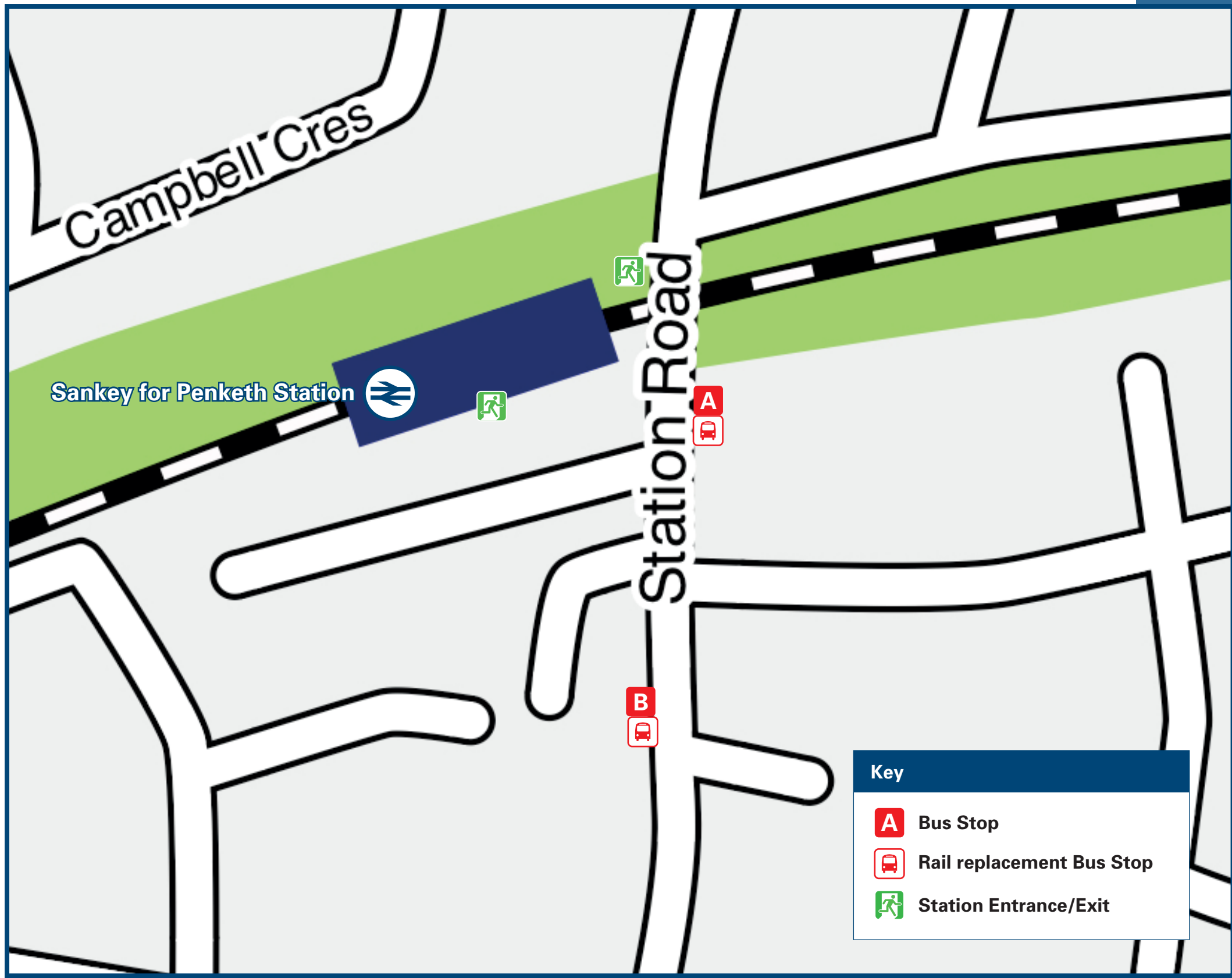
Sankey For Penketh Station

Onward Travel Information

Local area map



Buses



Rail replacement Pick Up / Drop Off at bus stops on Station Rd. (Station side of road for Liverpool, opposite for Manchester).

Main destinations by bus

(Data correct at October 2024)

DESTINATION	BUS ROUTES	BUS STOP
Great Sankey (Old Hall)	14	A
	15	B
Lingley Green	15	B
Meeting Lane	15	B
Old Liverpool Road	14	A
Penketh Lane Ends	15	B
	14	A
Sankey Bridges (Liverpool Road)	15	B
	14	A
Warrington Interchange (Town Centre)	15	B
	14	A

Notes
Bus route 14 operate a daily service, Mondays to Sundays.
Bus route 15 operates Mondays to Saturdays, only. No Sunday service.
 Direct trains operate to this destination from this Station.

Taxis

Sankey for Penketh Station has no taxi rank or cab office. Advance booking is essential, please consider using the following local operators: (Inclusion of this number doesn't represent any endorsement of the taxi firm)

Direct Taxi Warrington
01925 244 244

242 Warrington Taxis
01925 242 242

Bank Quay Taxis
01925 393 444

Further information about all onward travel

Local Cycle Info

warrington.gov.uk
For more information about cycle routes.

National Cycle Info

sustrans.org.uk
Sustrans is the UK's leading sustainable transport charity.

Bus Times

See timetable displays at bus stops.

www.traveline.info
0871 200 22 33
calls cost 15p per minute plus your phone company's access charge

NextBuses

Find the bus times for your stop.
Search for a bus stop by entering a postcode, street & town or a stop name & town.

PlusBus

plusbus.info
A discount price 'bus pass' that you buy with your train ticket. It gives you unlimited bus travel around your chosen town, on participating buses.

National Rail Enquiries

Online nationalrail.co.uk	NRE App Free National Rail Enquiries app for iOS and Android	Social Media facebook.com/nationalrailenq @nationalrailenq	Alert Me You can sign up to Alert Me messages on the National Rail Enquiries website where you can receive train and platform notifications directly to your smart phone. nationalrail.co.uk/alertme	Contact Centre 03457 48 49 50 Calls cost no more than calls to geographic numbers (01 or 02) and may be recorded.	PlusBike nationalrail.co.uk/plusbike For more information.
---	--	--	---	---	---



This poster shows details of popular destinations and main, frequent bus routes. Additional services may run, so please check with Traveline or see posters at local bus stops. Whilst considerable care has been taken to ensure the information contained on this poster is correct and accurate, National Rail cannot accept responsibility for any loss or inconvenience caused by any errors or omissions, or for loss, damage, injury or inconvenience relating to the cancellation, alteration, delay or diversion of a service. For any feedback, please e-mail comments@onwardtravelposters.com

Scan this code with your mobile for full station information.