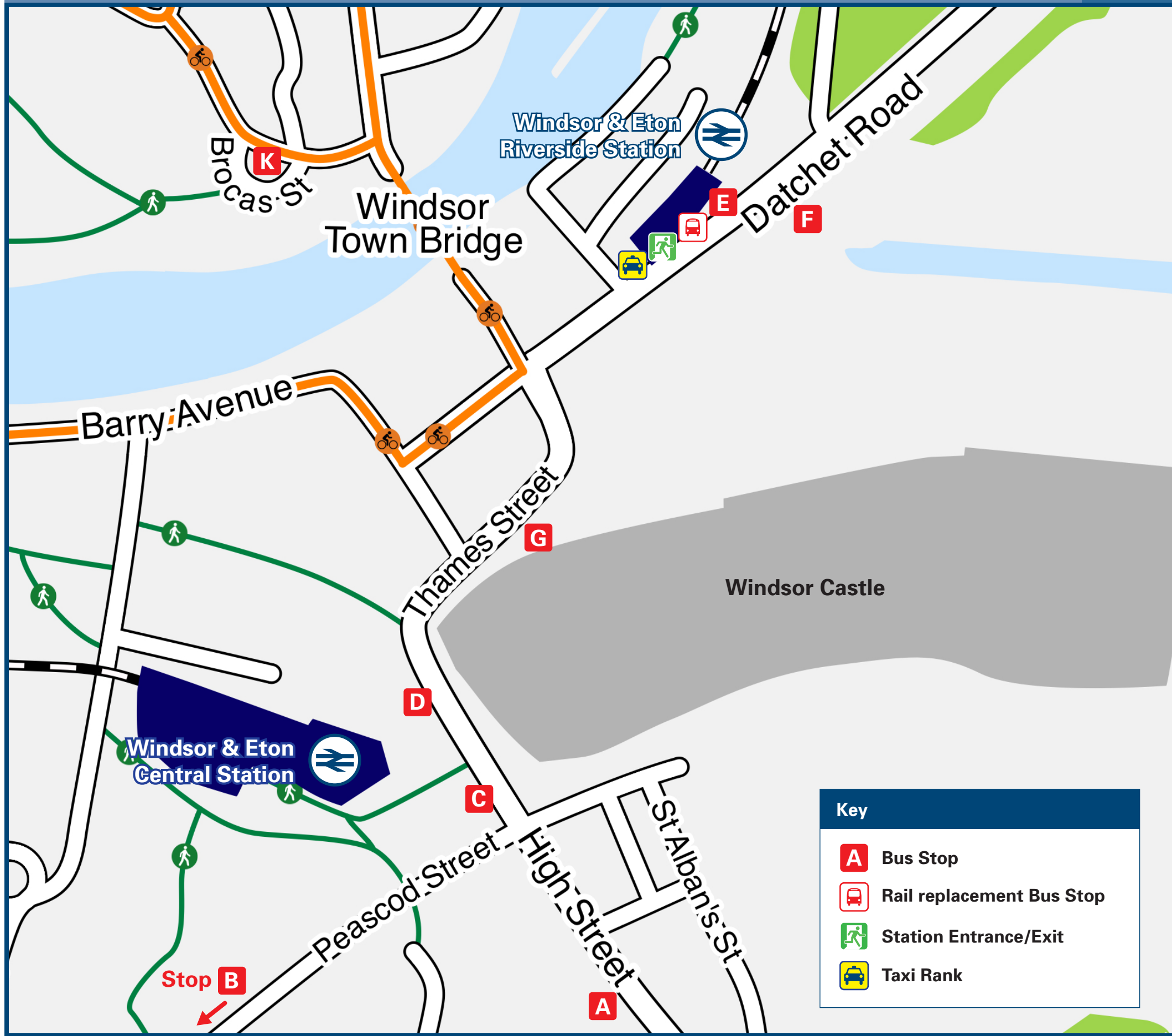




Windsor & Eton Riverside Station

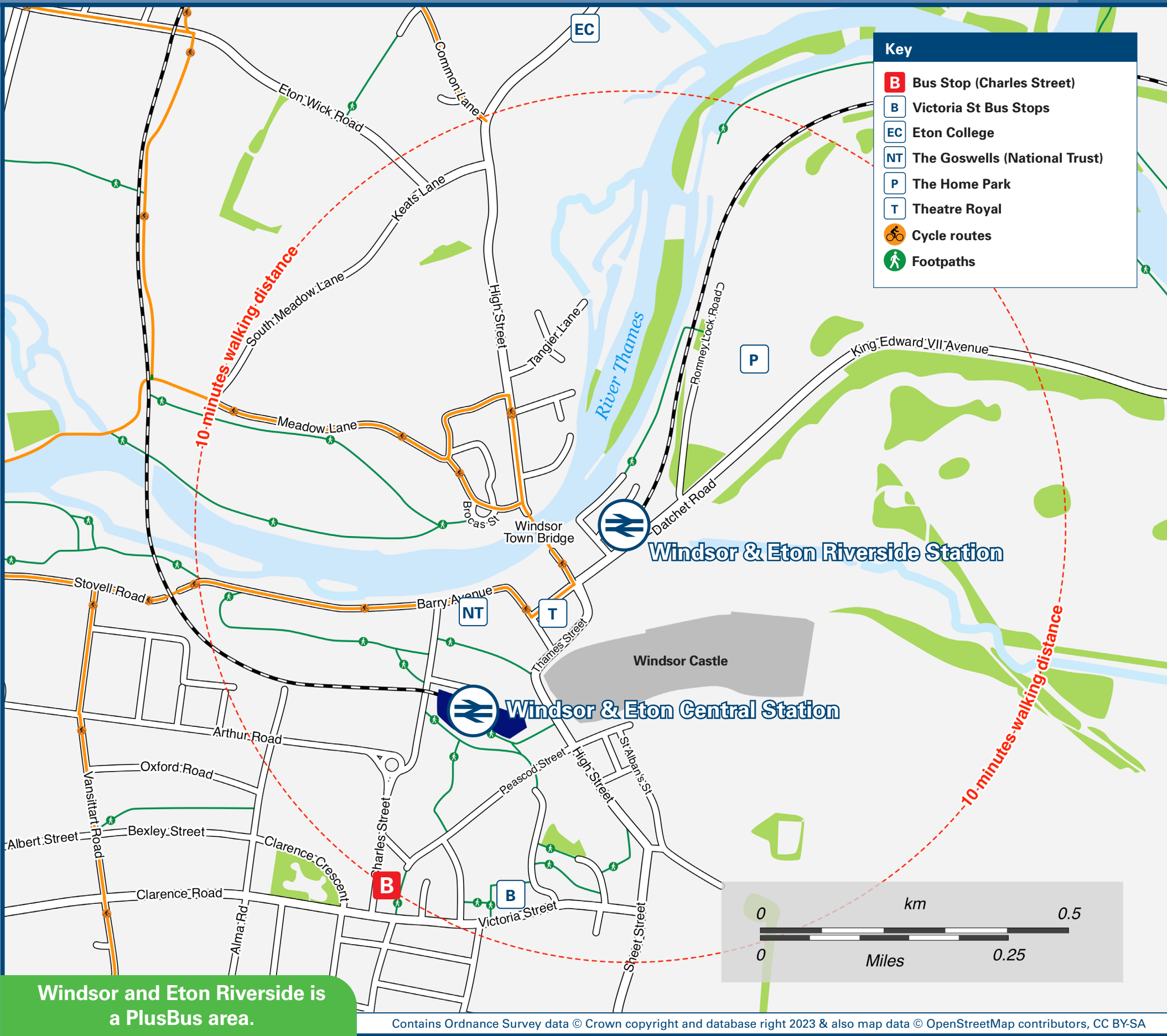
Onward Travel Information

Buses and Taxis



Rail replacement buses/coaches depart from outside the station on Datchet Road.

Local area map



PlusBus is a discount price 'bus pass' that you buy with your train ticket. It gives you unlimited bus travel around your chosen town, on participating buses. Visit www.plusbus.info

Main destinations by bus

(Data correct at December 2023)



DESTINATION	BUS ROUTES	BUS STOP
Ascot (Heatherwood Hospital)	702+, 703	G
Ascot (High Street for Ascot Racecourse)	01	B
BMI - The Princess Margaret Hospital	8, 02, 703	G
	W1, 16	C
Bracknell	702+, 703	G
Bray Village	16	C
Bray Wick	16	C
Chalvey	2, 8	D
	15	K
Cheapside	01	B
Clewer	2, 702, 703	G
	W1, 16	C
Cranbourne	703+	G
Datchet	P1	E
Dedworth	2	G
	W1, 16	C
Egham	8	G
Egham Hythe	8	G
Englefield Green	8	G

DESTINATION	BUS ROUTES	BUS STOP
Eton College	15	K
Eton Wick	15	K
Fifield	16	C
Heathrow Airport Terminal 5	8(via Staines) 703(via Slough)	G D
Langley	702, 703	D
Legoland	702, 703	G
Maidenhead	16	C
North Ascot	702+, 703	G
Old Windsor	8	G
Runnymede (Magna Carta Centre)	8*	G
Royal Holloway College (Englefield Green)	8	G
Slough	2, 8, 702, 703	D
	15	K
South Ascot	01	B
Staines	8	G
Sunningdale	01	B
Upton	15	K
Windsor Great Park (The Village)	01	B

DESTINATION	BUS ROUTES	BUS STOP
Windsor (King Edward VII Hospital)	8, 702, 703	G
	W1, 16	C
Windsor & Eton Circular Tour Bus	Tour Bus #	E

Notes

● **PlusBus** destination, please see below for details.
Bus routes 01, 2 and 15 operate Mondays to Saturdays.
Bus routes 8, 16, 702 and 703 operate daily.
Bus routes P1 and W1 operate Mondays to Fridays only.
For bus times and other bus service enquiries, please contact Traveline on 0871 200 22 33 or contact the bus operator (see below):
First Berkshire & The Thames Valley (for bus route 8) call 0345 646 0707; Reading Buses (for The Londonline 702 & Flightline 703) call 0118 959 4000; Thames Valley Buses (for bus routes 2, 15 & 16) call 0118 973 3486 or White Bus Services (for bus routes 01, P1 & W1) call 01344 882 612.
● Direct trains operate to this destination from this station.
● Direct trains operate to this destination from Windsor & Eton Central station.
● Take the train from Windsor & Eton Central station and change at Slough for Maidenhead.
* Alight bus at Old Windsor, The Bells of Ouzeley Public House, it's a 10 minutes walk to Runnymede Magna Carta Centre and Monument.
+ Not all journeys call at this destination with this service, please check timetables.
Windsor & Eton Circular Tour Bus (Tootbus and Golden Tours). For times, days of operation, route and fares contact Golden Tours on 020 7630 2028 or Tootbus on 020 8877 1722.

Taxis

Windsor & Eton Riverside is served by a taxi rank or cab office. Check availability before travelling, and pre-book if necessary. Please consider using the following local operators: (Inclusion of this number doesn't represent any endorsement of the taxi firm)

Windsor Cab Rank
01753 862 020

Royal Windsor Taxis
01753 585 585

5 Star Cars
01753 858 888

Further information about all onward travel

Local Cycle Info

rbwm.gov.uk

For more information about cycle routes.

National Cycle Info

sustrans.org.uk

Sustrans is the UK's leading sustainable transport charity.

Bus Times

See timetable displays at bus stops.

www.traveline.info
0871 200 22 33
call cost 15p per minute plus your phone company's access charge

NextBuses

Find the bus times for your stop.
Search for a bus stop by entering a postcode, street & town or a stop name & town.

PlusBus

plusbus.info

A discount price 'bus pass' that you buy with your train ticket. It gives you unlimited bus travel around your chosen town, on participating buses.

National Rail Enquiries

Online

nationalrail.co.uk

NRE App

Free National Rail Enquiries app for iOS and Android

Social Media

facebook.com/nationalrailenq
@nationalrailenq

Alert Me

You can sign up to Alert Me messages on the National Rail Enquiries website where you can receive train and platform notifications directly to your smart phone.
nationalrail.co.uk/alertme

Contact Centre

03457 48 49 50
Calls cost no more than calls to geographic numbers (01 or 02) and may be recorded.

PlusBike

nationalrail.co.uk/plusbike
For more information.

South Western Railway



National Rail
Britain's train companies working together

